

# TECHNICAL DOCUMENTATION

## LANDSCAPING AND OUTDOOR PROJECTS

### Logs

Sawn timber products in Scots pine, treated for use class 4 purposes.

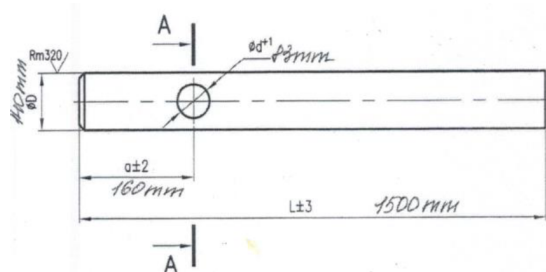
X: proposed      -: not proposed

LENGTH (m)	Ø 4 cm	Ø 6 cm	Ø 8 cm	Ø 10 cm	Ø 12 cm	Ø 14 cm	Ø 16 cm
<b>1.5</b>	-	-	-	X	X	-	-
<b>pointed</b>	X	X	X	-	-	-	-
<b>1.75</b>	-	-	-	-	-	-	-
<b>pointed</b>	-	-	-	X	X	-	-
<b>2.00</b>	-	-	X	X	X	X	X
<b>pointed</b>	X	X	X	X	X	-	-
<b>2.50</b>	-	-	X	X	X	X	X
<b>pointed</b>	X	X	-	-	-	-	-
<b>3.00</b>	-	-	X	X	X	X	X
<b>pointed</b>	-	X	-	-	-	-	-
<b>4.00</b>	-	-	-	X	X	X	X

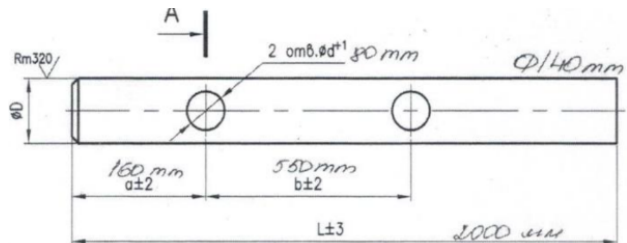
Please contact us for any special request.

Logs can be chamfered and drilled as shown below:

Logs Ø 14 cm by 1.50 m  
with 1 drilled hole Ø 82mm



Logs Ø 14 cm by 2.00 m  
with 2 drilled holes Ø 82mm



## Half-log

Sawn timber products in Scots pine, treated for use class 4 purposes.

X: proposed      -: not proposed

LENGTH (m)	Ø 8 cm	Ø 10 cm	Ø 12 cm
2.00	X	X	X
2.50	X	X	X
3.00	-	X	X
4.00	-	X	X

## Square posts

Sawn timber products in Scots pine, treated for use class 4 purposes.

	Unit
9 x 9 x 2.00 m	Part

## Cladding & Deck boards

Planed products in Scots pine treated for use class 4 purposes.

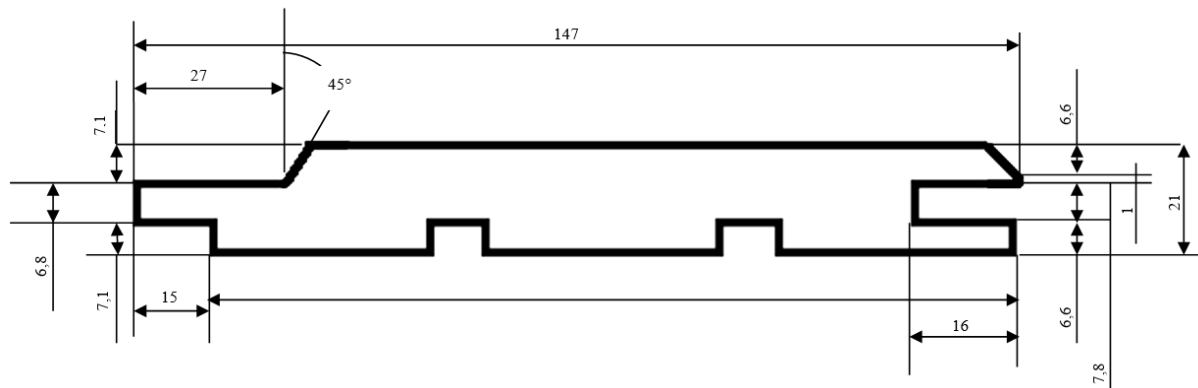
Other species on request.

	Order unit
<b>Cladding A/B grooved profile COLOURLESS</b> 21 x 132 cm, various lengths	m <sup>2</sup>
<b>Grooved deck boards COLOURLESS</b> 21 x 95 cm, length subject to availability	m <sup>2</sup>
27 x 145 cm, length subject to availability	m <sup>2</sup>
	Order unit
<b>Cladding A/B grooved profile BROWN</b> 21 x 132 cm, various lengths	m <sup>2</sup>
<b>Grooved deck boards BROWN</b> 27 x 145 cm, length subject to availability	m <sup>2</sup>

Cladding must be machined and fitted in accordance with best practices, i.e. DTU 41.2.

Deck boards must be laid in accordance with best practices, i.e. DTU 51.4.

### Grooved cladding profile



### Landscape sleepers

Oak products treated for use class 4 purposes.

	Order unit
<b>10 x 20 x 1.00 m</b>	Part
<b>10 x 20 x 1.50 m</b>	Part
<b>10 x 20 x 2.00 m</b>	Part
<b>10 x 20 x 2.50 m</b>	Part
<b>12 x 17 x 2.60 m</b>	Part

### Use class

The use class determines the degree of resistance, through a wood's natural durability or through durability conferred by a treatment process (autoclave, thermally modified). This classification is set by standard EN 335, based on the risks of exposure of the structure to humidity and therefore, biological risks.

1

- Wood always in dry interior - panelling, door, parquet flooring, etc.

2

- Wood indoors or under shelter with very occasional exposure to moisture - structure, framework, cladding sheltered under a canopy, etc.

3.1

- Wood outdoors above ground. Frequent exposure to moisture for short periods (a few days).

3.2

- Wood outdoors above ground. Very frequent exposure to moisture for significantly long periods (a few weeks).

4

- Wood outdoors in constant contact with the ground and/or water, or even submerged in fresh water - stakes or posts planted in the ground, decking joists, etc.

5

- Wood submerged in seawater - floating dock or jetty columns in a marine environment